

Summer 2015

Entraining Brain Oscillations to Influence Facial Perception

Rosie Irwin

University of Puget Sound, rirwin@pugetsound.edu

Follow this and additional works at: http://soundideas.pugetsound.edu/summer_research



Part of the [Cognitive Neuroscience Commons](#)

Recommended Citation

Irwin, Rosie, "Entraining Brain Oscillations to Influence Facial Perception" (2015). *Summer Research*. Paper 247.
http://soundideas.pugetsound.edu/summer_research/247

This Article is brought to you for free and open access by Sound Ideas. It has been accepted for inclusion in Summer Research by an authorized administrator of Sound Ideas. For more information, please contact soundideas@pugetsound.edu.

Entraining Brain Oscillations to Influence Facial Perception

Rosie Irwin and David Andresen
University of Puget Sound, Department of Neuroscience

Introduction

- Brain oscillations are the result of neurons, perhaps in multiple regions of the brain, processing the same stimulus and consequently synchronizing to the same frequency (Hz) (Schnitzler, 2005).
- Using electroencephalography (EEG), brain oscillations have been associated with many different cognitive functions like visual and auditory perception, attention, and emotion processing (Thut & Miniussi, 2009).
- Periodic oscillating stimuli, like face images, can be used to entrain (synchronize) brain oscillations to a set frequency (Rossion & Boremanse, 2011).
- Entrainment influences perception of visual (Mathewson et al., 2012) and auditory (Will & Berg, 2007) stimuli.

Methods

Experimental Setup

- 20 participants were recruited from the University of Puget Sound.
- EEG was used to measure neural activity. For this, subjects were fitted with a 32-channel BioSemi active electrode system, referenced by left and right mastoid electrodes.

Task Specifics

- Face stimuli were obtained from the Radboud Faces Database (Langner et al., 2010). Faces were emotionally neutral, happy, or disgusted (Figure 1).
- Figure 1 depicts the procedure of each trial. Each example demonstrates a possible combination of variables (scramble vs. face, emotion, and timing) for the target image. Figure 2 outlines the possible variable combinations.
- After each trial, subjects indicated if the target image was a scramble or face and which emotion was expressed using the left and right arrow keys on a QWERTY keyboard.

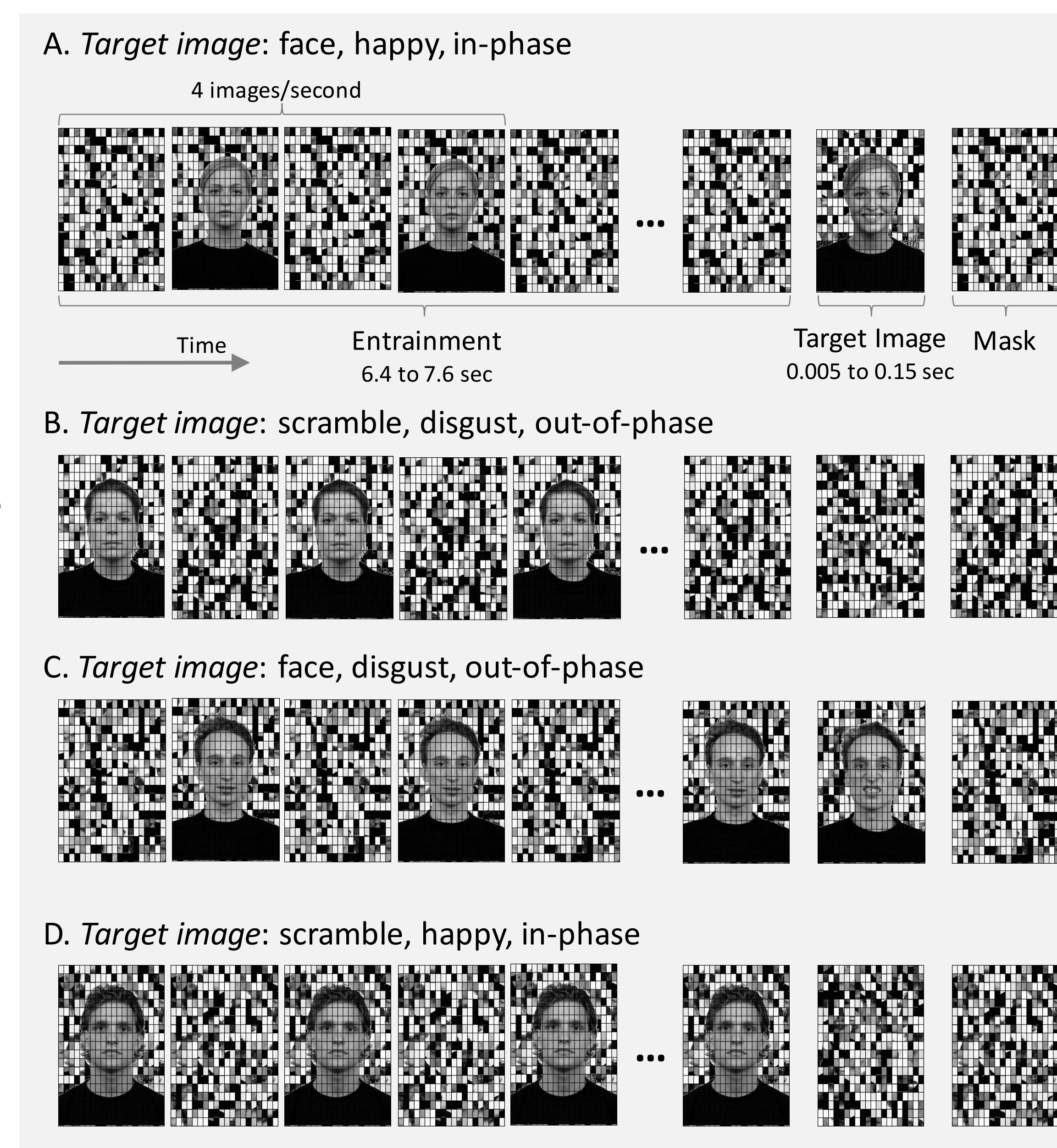


Figure 1. Example trials with possible target image variable combinations.

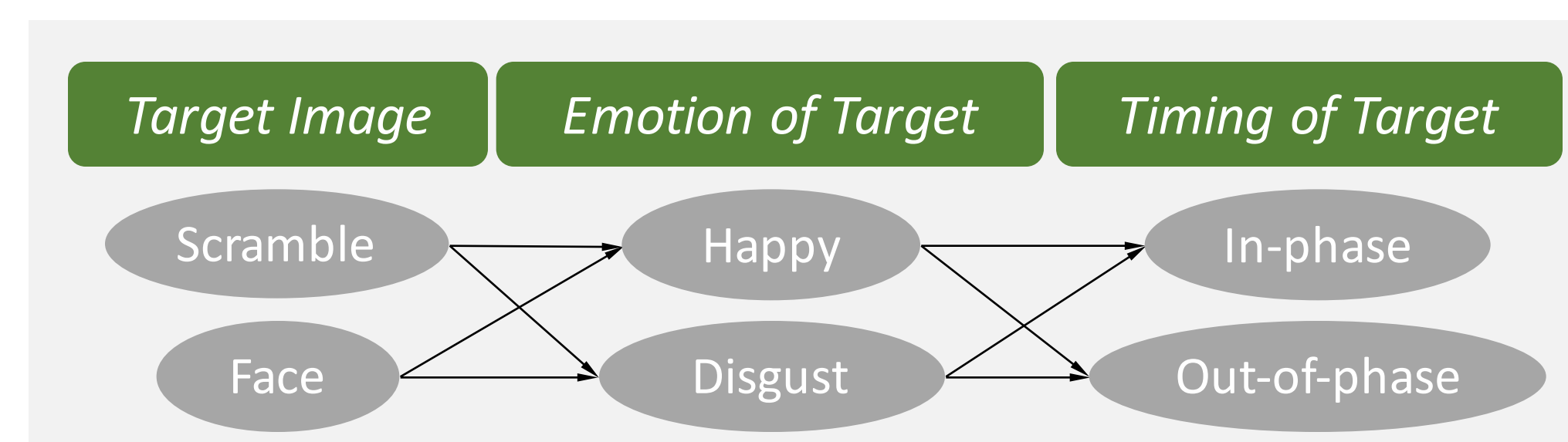


Figure 2. All possible target image variable combinations.

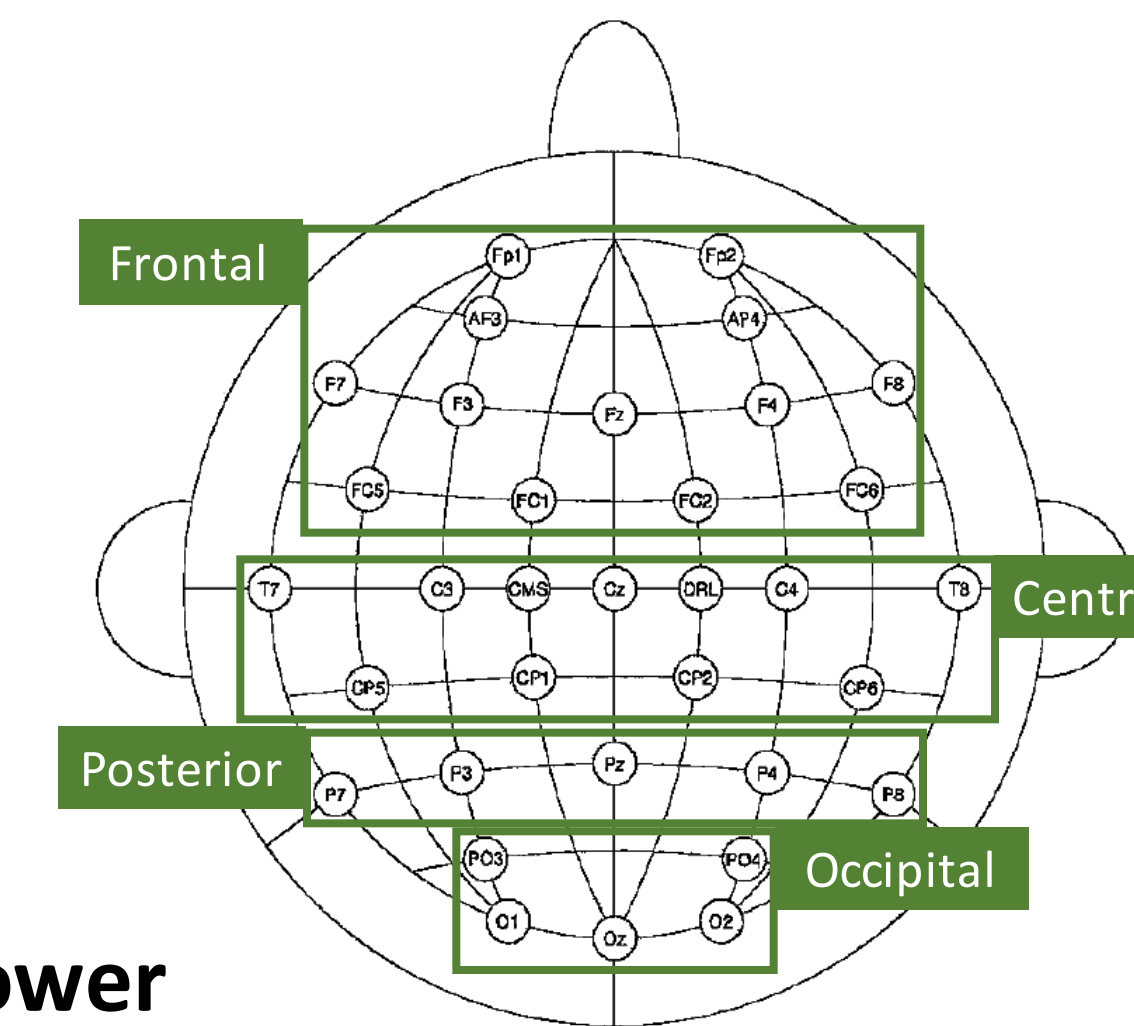
Data Analysis

- Behavioral effects were assessed by proportion of correct target identifications (face vs. scramble).
- Spectral density plots were generated from EEG data to determine oscillation power of the entrainment frequencies (4 Hz for all stimuli, 2 Hz for faces) across the scalp.
- Information from each electrode was grouped based on the region of the cortex (Figure 3) – occipital, posterior, central, or frontal regions of interest (ROIs) – and the frequencies at which the most power was expressed were identified.

Results

Neural

- All regions of interest (ROIs) showed entrainment (Figure 3).
- Non-occipital ROIs were significantly more entrained to 2 Hz than 4 Hz ($p < 0.01$).
- The occipital ROI was significantly more entrained to 4 Hz than 2 Hz ($p = 0.035$).



EEG Entrainment Power

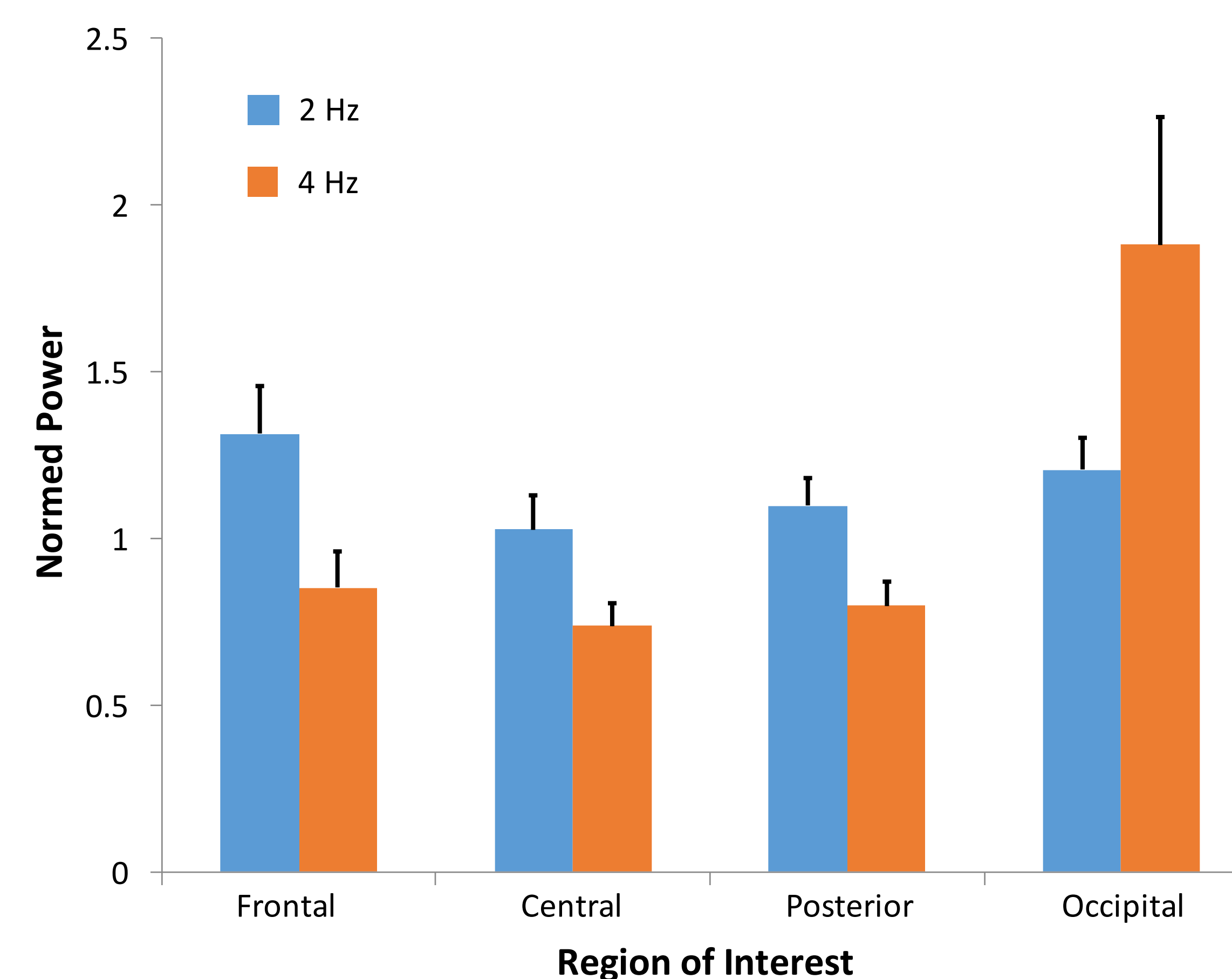


Figure 3. Top: BioSemi 32-channel electrode layout grouped to form each region of interest. Bottom: Normed power for each region of interest at 2 Hz and 4 Hz.

Behavioral

- Correct identification of faces shown in-phase was significantly higher than correct identification of those shown out-of-phase ($p = 0.02$) (Figure 4).
- Phase timing had no significant effect on accuracy in identifying a scramble image.
- Proportion correct for scramble targets was significantly higher than for face targets.

Accuracy by Stimulus Type and Phase

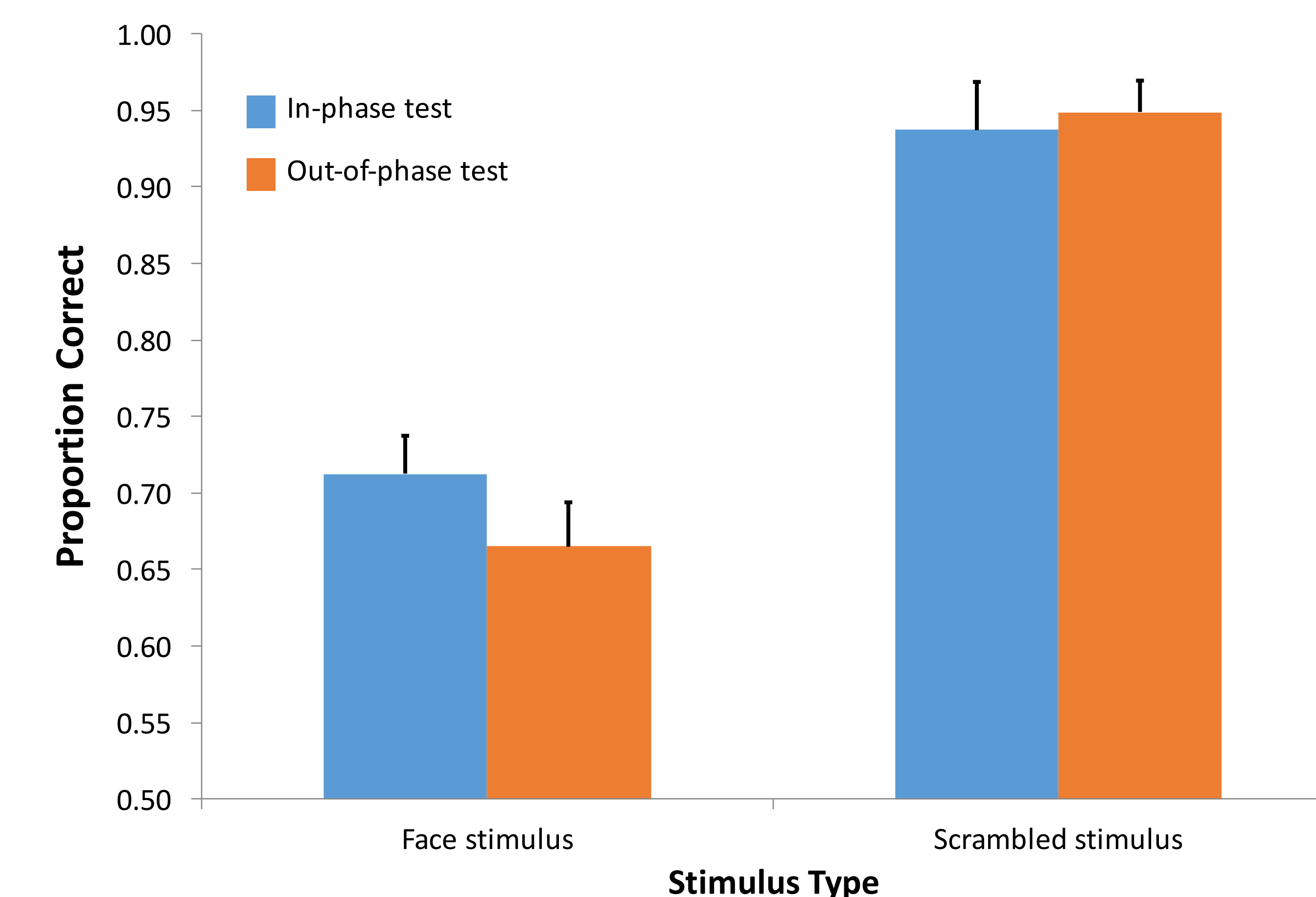


Figure 4. Proportion of target images correctly identified as a face or scramble when in- or out-of-phase.

Conclusions

- Separate entrainment of the occipital ROI and posterior, central, and frontal ROIs can be achieved with face stimuli.
- Entraining with face stimuli influences the ability of a subject to accurately identify faces shown in-phase versus out-of-phase.
- Subjects were biased towards identifying the target image as a scramble when less certain if the target was a face or a scramble.

Future Directions

- Explore the effect of target emotion on the ability of a subject to discriminate between a face and a scramble.
- Compare correct identification of target emotion (happy vs disgust) between in-phase and out-of-phase target faces.
- Evaluate event-related potentials resulting from in-phase versus out-of-phase target images to better associate changes in neural activity with entrainment and the observed behavioral effects.

References

- Langner, O., Dotsch, R., Bijlstra, G., Wigboldus, D. H. J., Hawk, S. T., & van Knippenberg, A. (2010). Presentation and validation of the Radboud Faces Database. *Cognition & Emotion*, 24(8), 1377–1388. <http://doi.org/10.1080/02699930903485076>
- Mathewson, K. E., Prudhomme, C., Fabiani, M., Beck, D. M., Lleras, A., & Gratton, G. (2012). Making Waves in the Stream of Consciousness: Entraining Oscillations in EEG Alpha and Fluctuations in Visual Awareness with Rhythmic Visual Stimulation. *Journal of Cognitive Neuroscience*, 24(12), 2321–2333.
- Rossion, B., & Boremanse, A. (2011). Robust sensitivity to facial identity in the right human occipito-temporal cortex as revealed by steady-state visual-evoked potentials. *Journal of Vision*, 11(2), 1–21.
- Schnitzler, A. Joachim. (2005). Normal and pathological oscillatory communication in the brain. *Nature Reviews Neuroscience*, 6(4), 285–296. <http://doi.org/10.1038/nrn1650>
- Thut, G., & Miniussi, C. (2009). New insights into rhythmic brain activity from TMS–EEG studies. *Trends in Cognitive Sciences*, 13(4), 182–189.
- Will, U., & Berg, E. (2007). Brain wave synchronization and entrainment to periodic acoustic stimuli. *Neuroscience Letters*, 424(1), 55–60. <http://doi.org/10.1016/j.neulet.2007.07.036>

Acknowledgments

Research was funded by the Keck Neuroscience Grant awarded through the Arts, Humanities, and Social Sciences Summer Research Grant program at the University of Puget Sound. Special thanks to David Andresen for his support, guidance, and collaboration.